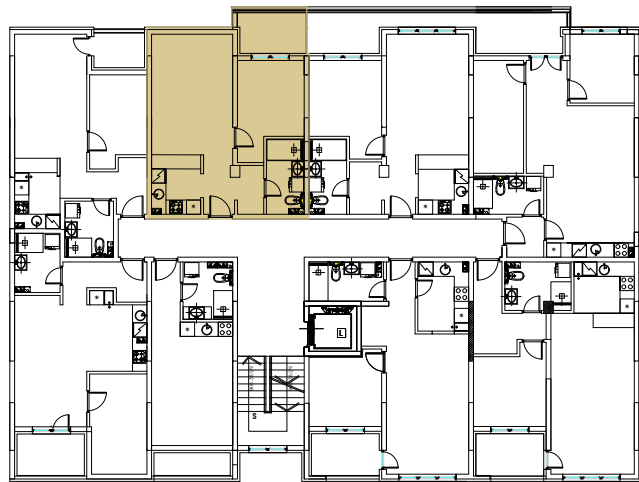
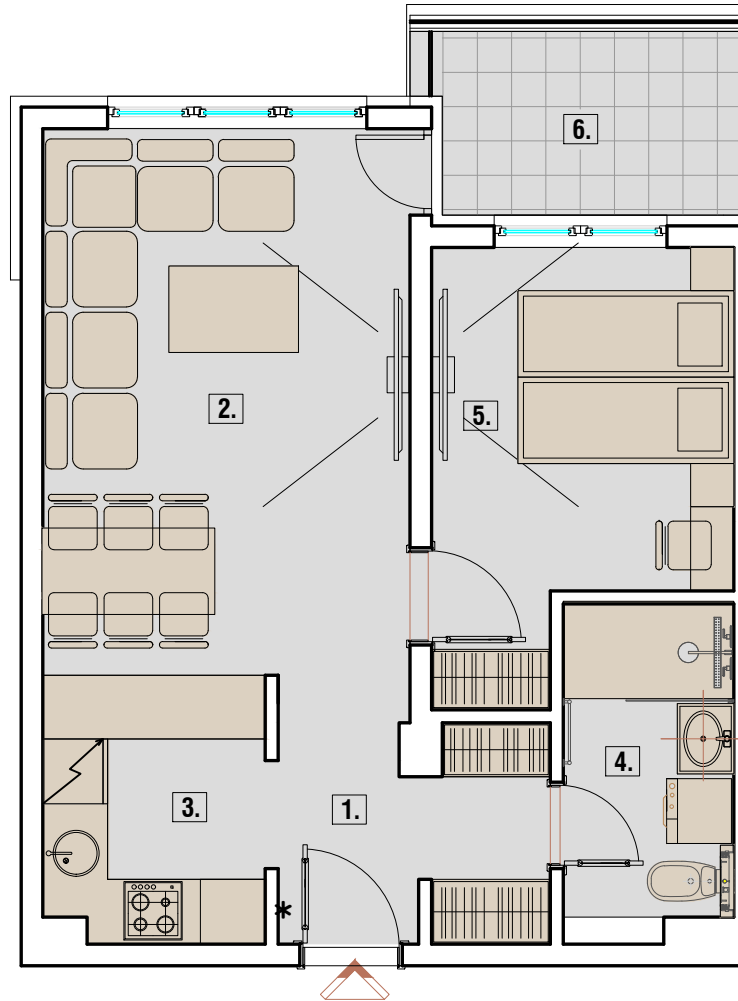




POLOŽAJ STANA NA ETAŽI



OSNOVA STANA

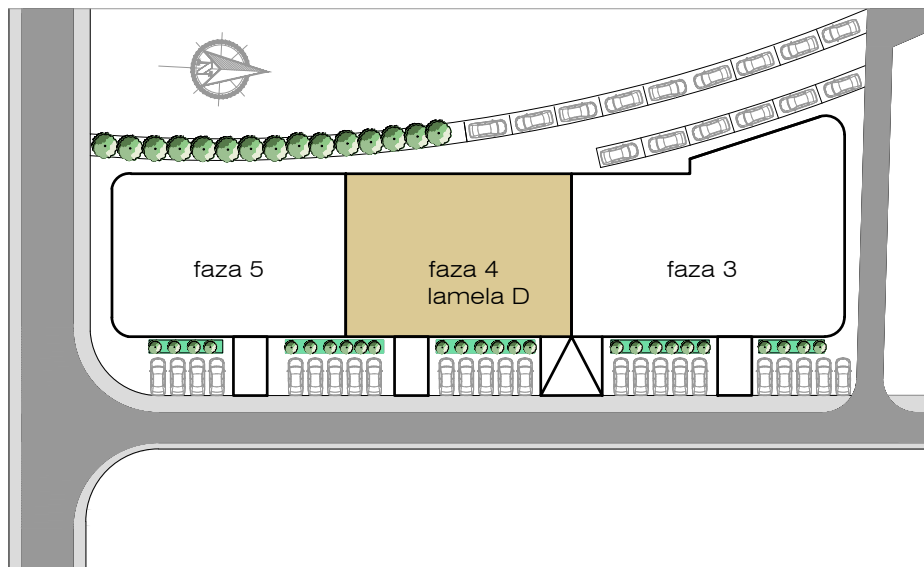


STAN 35 DVOŠOBAN	PROSTORIJE	
		m2
	1. Ulaz	4.61
	2. Dnevni boravak i trpezarija	18.02
	3. Kuhinja	5.11
	4. Kupatilo	4.57
	5. Soba	10.11
6. Terasa	4.75	
	Ukupno	47.17

DETALJI

LAMELA
BROJ STANA
SPRAT
STRUKTURA

D
35
ČETVRTI SPRAT
DVOŠOBAN



stan br.35 ČETVRTI SPRAT_dvosoban_47.17m2

