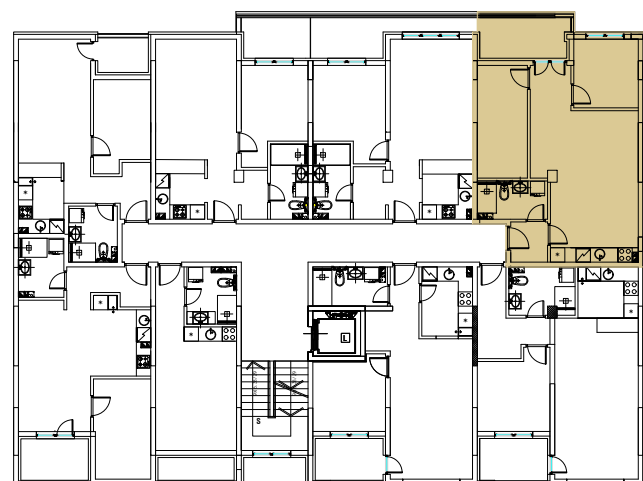
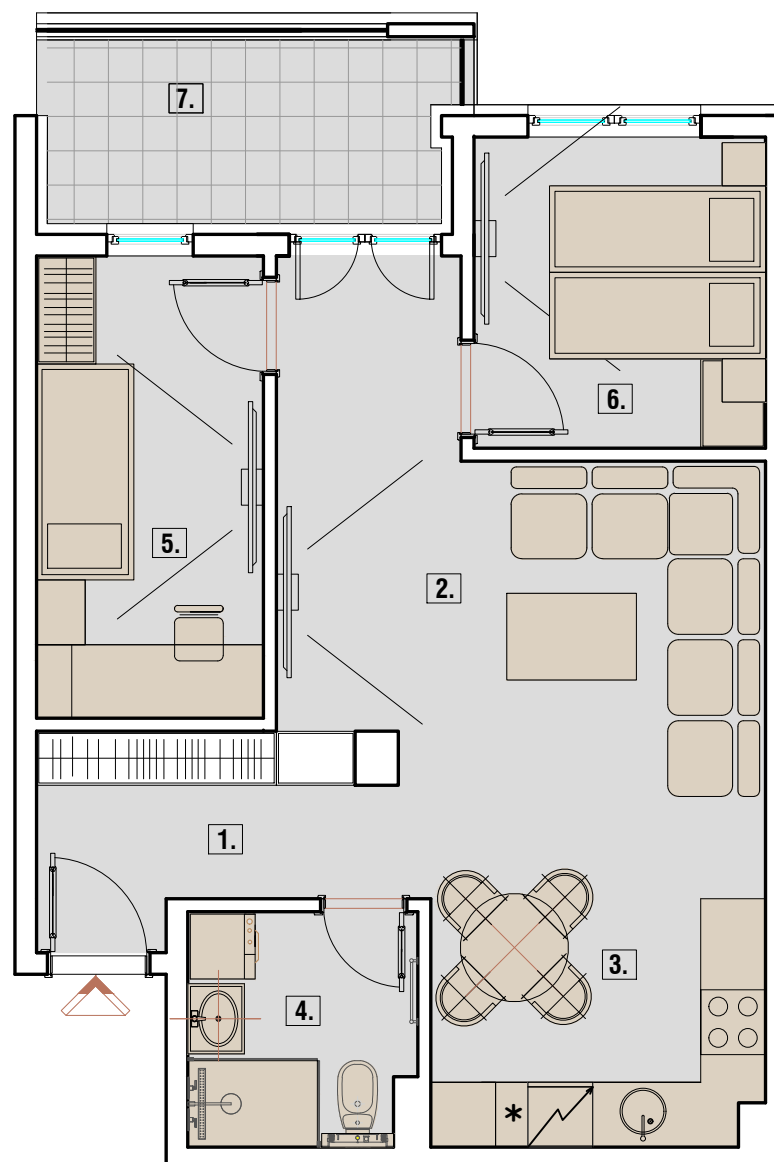




POLOŽAJ STANA NA ETAŽI



OSNOVA STANA

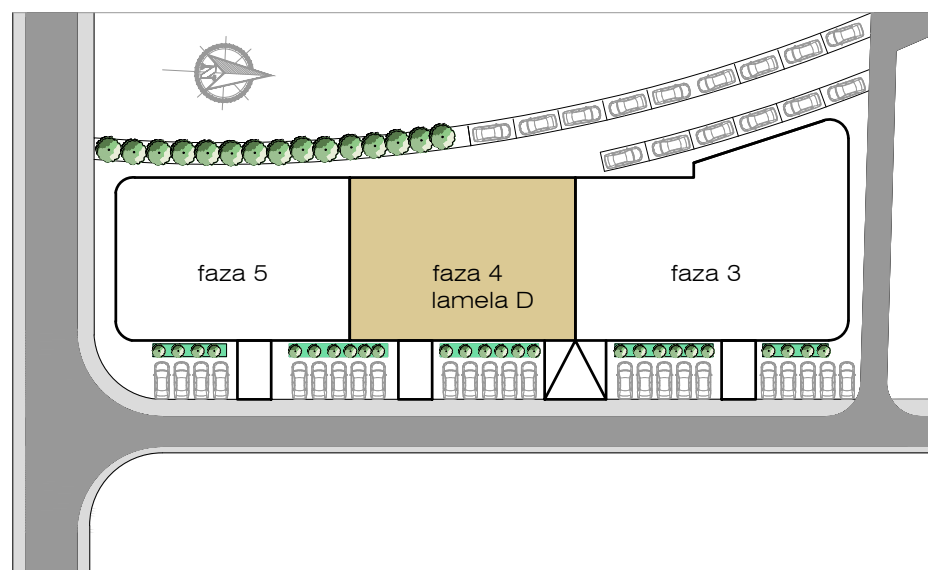


STAN 37 DVOIPOSOBAN	PROSTORIJE	
		m2
	1. Ulaz	5.38
	2. Dnevni boravak i trpezarija	20.05
	3. Kuhinja	7.02
	4. Kupatilo	4.48
	5. Soba	8.98
	6. Soba	7.77
7. Terasa	6.43	
Ukupno	60.11	

DETALJI

LAMELA
BROJ STANA
SPRAT
STRUKTURA

D
37
ČETVRTI SPRAT
DVOIPOSOBAN



stan br.37 ČETVRTI SPRAT_dvoiposoban_60.11m2

