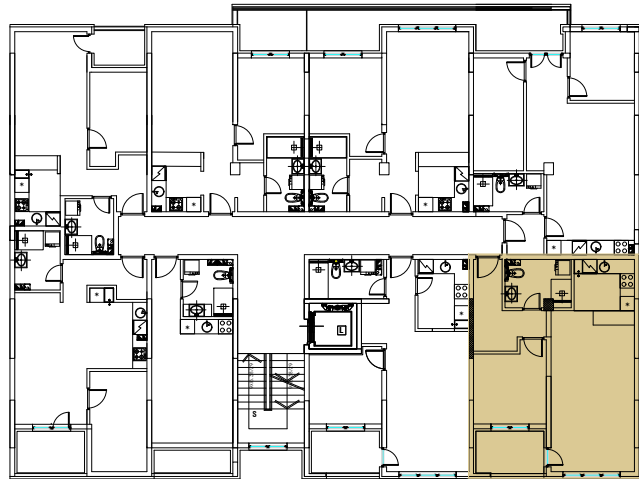
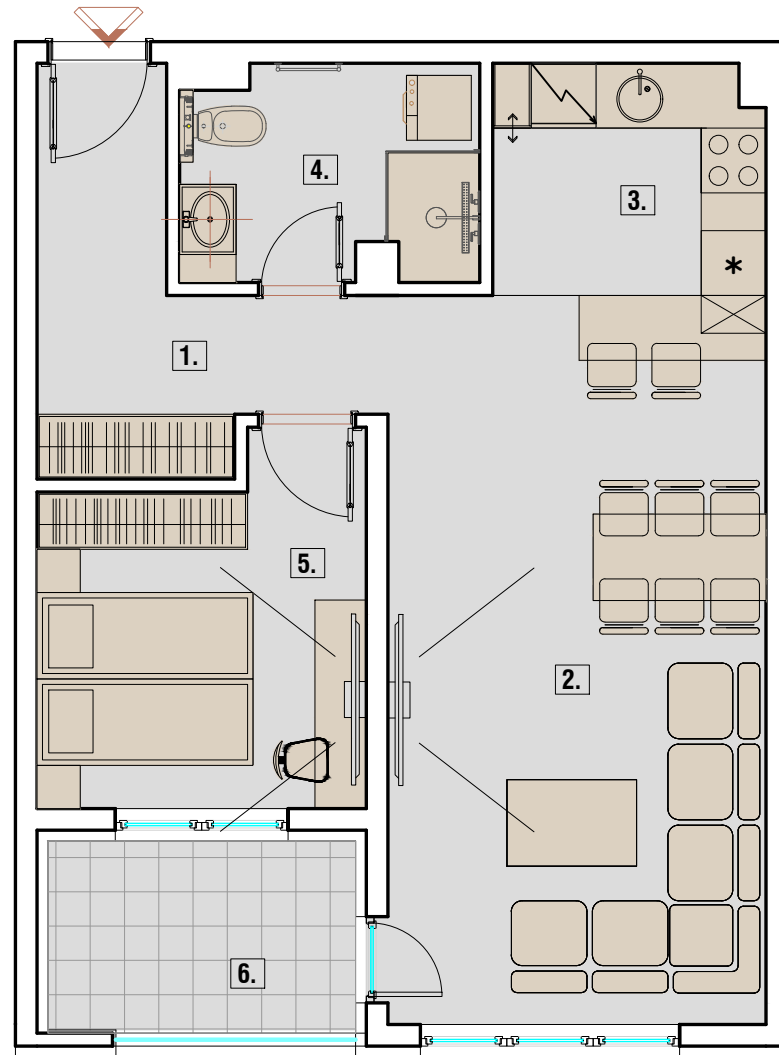




POLOŽAJ STANA NA ETAŽI



OSNOVA STANA

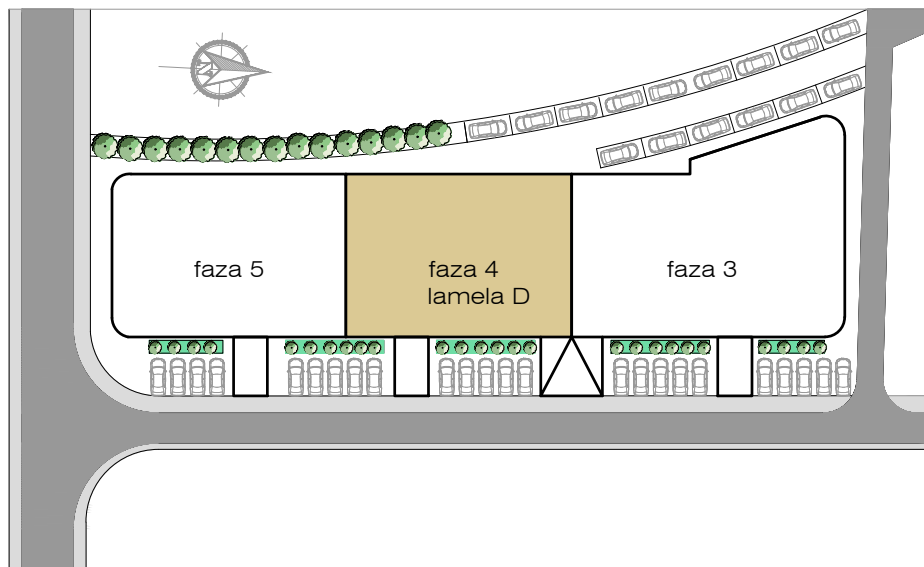


| STAN 38<br>DVOŠOBAN | PROSTORIJE                     |       |
|---------------------|--------------------------------|-------|
|                     |                                | m2    |
|                     | 1. Ulaz                        | 7.25  |
|                     | 2. Dnevni noravak i trpezarija | 23.62 |
|                     | 3. Kuhinja                     | 5.30  |
|                     | 4. Kupatilo                    | 5.07  |
|                     | 5. Soba                        | 9.59  |
| 6. Terasa           | 5.06                           |       |
| <b>Ukupno</b>       | <b>55.89</b>                   |       |

DETALJI

LAMELA  
BROJ STANA  
SPRAT  
STRUKTURA

**D**  
**38**  
**ČETVRTI SPRAT**  
**DVOŠOBAN**



stan br.38 ČETVRTI SPRAT\_dvosoban\_55.89m2

