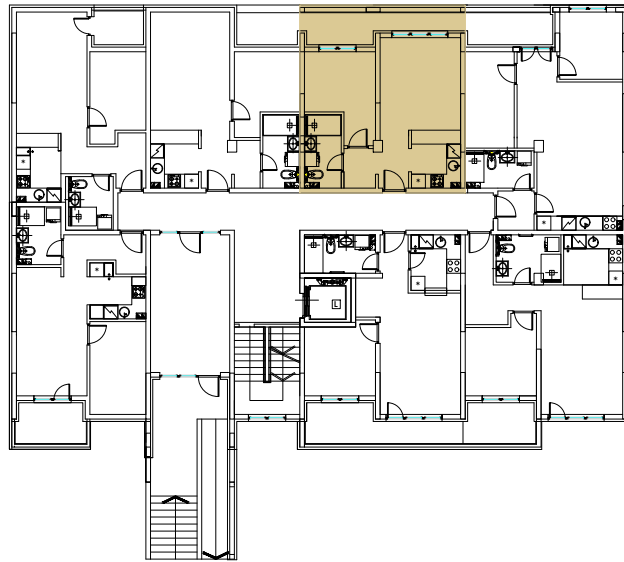
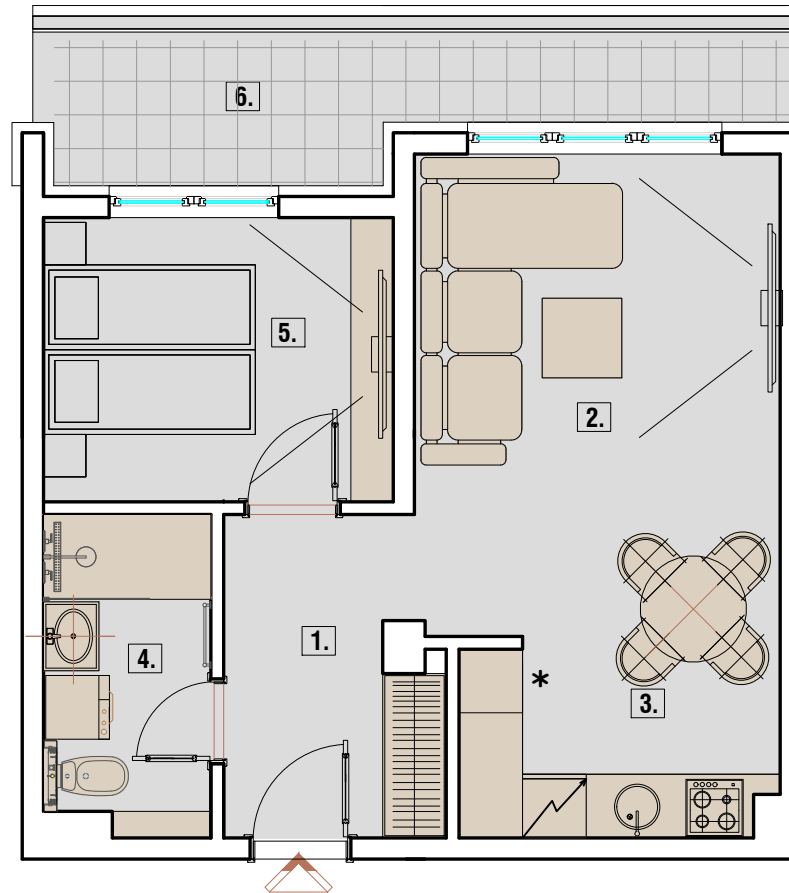




POLOŽAJ STANA NA ETAŽI



OSNOVA STANA

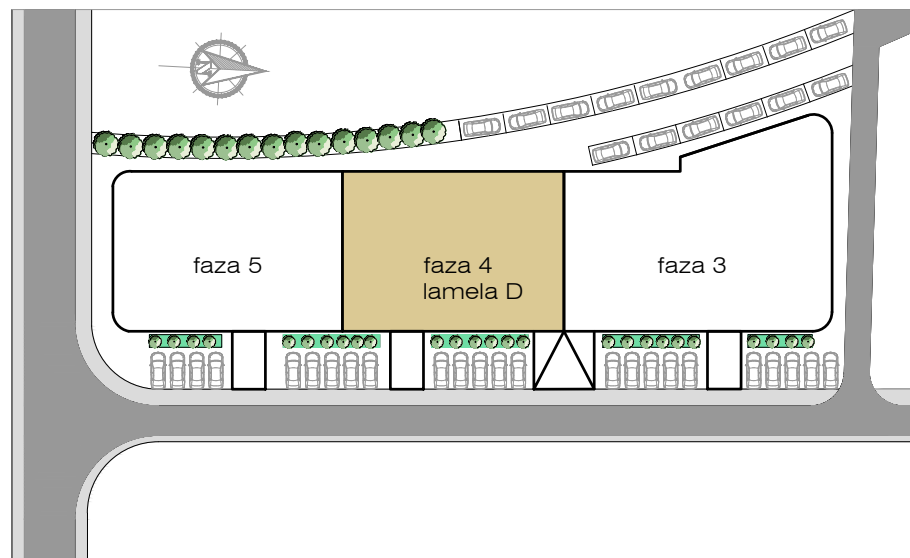


STAN 4-dvosobni

PROSTORIJE	m2
1. Ulaz	5.55
2. Dnevni boravak i trpezarija	15.98
3. Kuhinja	5.54
4. Kupatilo	4.42
5. Soba	8.84
6. Terasa	7.37
Ukupno	47.70

DETALJI

LAMELA	D
BROJ STANA	4
SPRAT	PRIZEMLJE
STRUKTURA	DVOSOBAN



stan br.4 PRIZEMLJE_dvosoban_47.70m2

