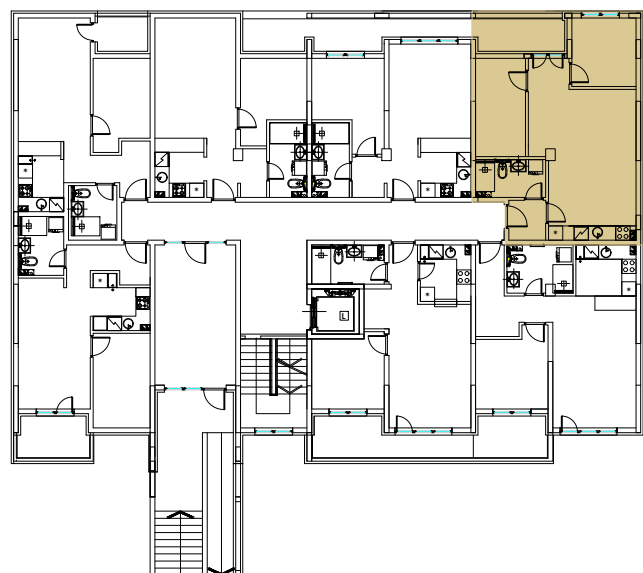
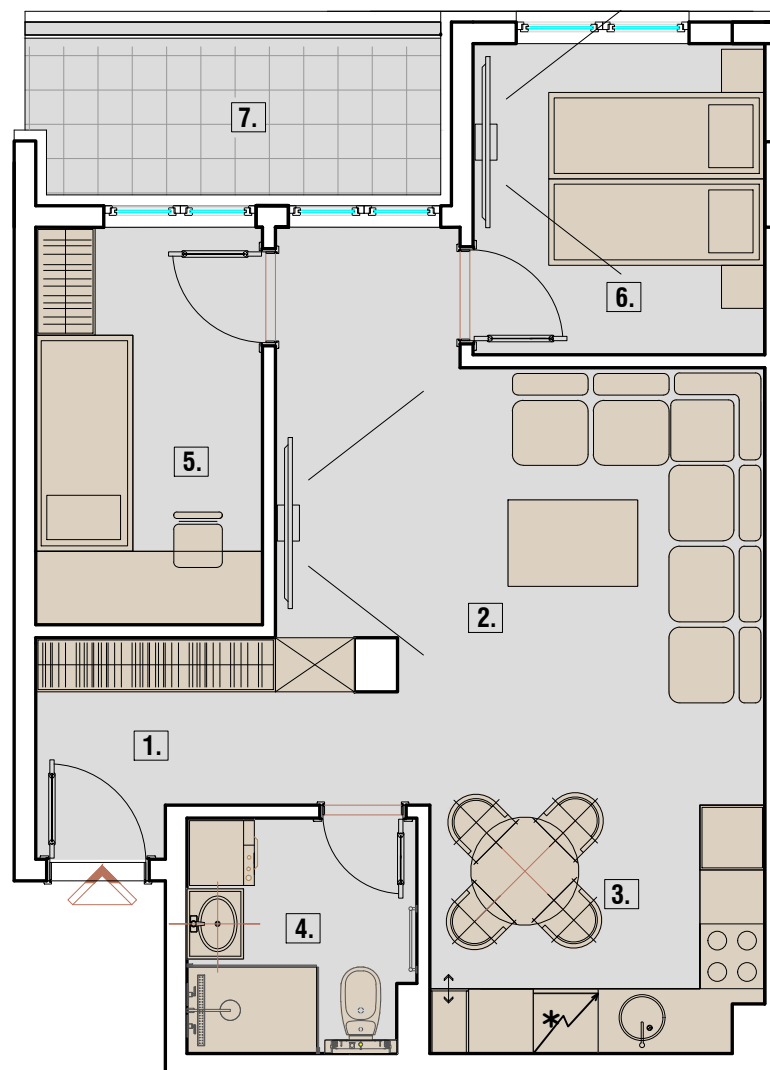




POLOŽAJ STANA NA ETAŽI

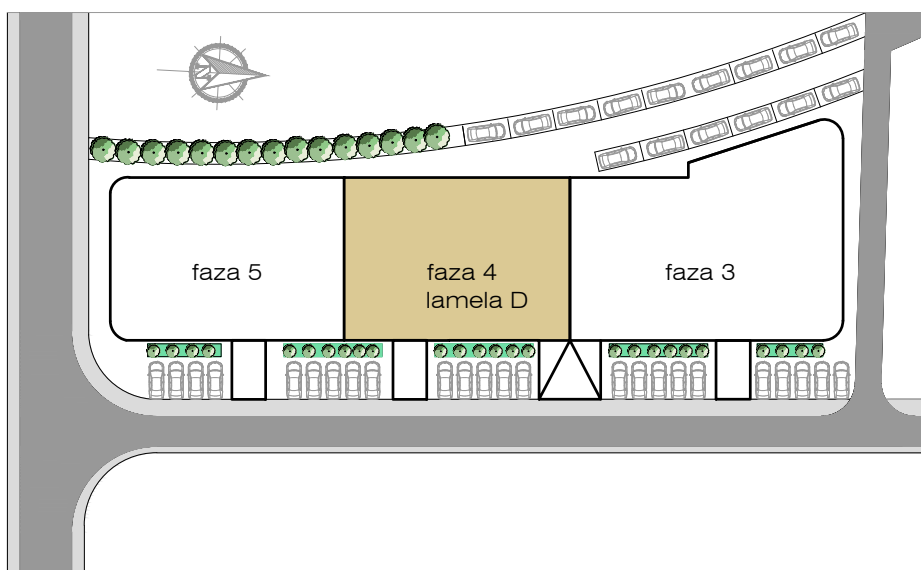


OSNOVA STANA



| STAN 5 dvoiposobni | PROSTORIJE | | m2 |
|-----------------------|------------|-----------------------------|-------|
| | 1. | Ulaz | 5.38 |
| | 2. | Dnevni boravak i trpezarija | 19.02 |
| | 3. | Kuhinja | 6.99 |
| | 4. | Kupatilo | 4.26 |
| | 5. | Soba | 7.72 |
| | 6. | Soba | 7.77 |
| | 7. | Terasa | 5.15 |
| Ukupno | | 56.29 | |

| DETALJI | |
|------------|-------------|
| LAMELA | D |
| BROJ STANA | 5 |
| SPRAT | PRIZEMLJE |
| STRUKTURA | DVOIPOSOBAN |



stan br.5 PRIZEMLJE_dvosoban_56.29m2

